

# Industrial Indicators of the Buenos Aires Province

This report presents the results for the month of \_\_\_\_\_  
December 2010.

February 10, 2011

## Summary

In 2010 the automotive and steel industries were the sectors that led the growth of industrial indicators surveyed in the province of Buenos Aires<sup>1</sup>. Specifically, compared to 2009 the highest cumulative increases are the following: Manufacture of pickup trucks<sup>2</sup> (63.0%), Manufacture of family cars and minivans (26.1%), Manufacture of passenger and freight transport vehicles (26.0%) and Manufacture of basic iron and steel (24.1%).

In addition, during the month of December 2010 nine of the fourteen activities showed year-over-year (Y/Y) increases in their levels of production. The highest increases were: Manufacture of pickup trucks, Manufacture of basic iron and steel, Production of beer, malt liquors and malt and Production of cigarettes and tobacco products n.e.c.<sup>3</sup>, which increased by 60.4%, 21.1%, 20.2% and 16.9%, respectively.

The following tables summarize the monthly, year-over-year and accumulated variation of the selected activities.

**Table 1**

**Variation of selected activities  
December 2010**

Activity	Variation		
	Monthly	Y/Y	Accumulated
Production and processing of poultry	▲	▲	▲
Production of cold cuts	...	...	...
Production of milk and dried milk products	▼	▼	▲
Grinding wheat	▼	▼	▲
Production of cookies and cakes	▼	▲	▲
Production of beer, malt liquors and malt	▲	▲	▲
Production of cigarettes and tobacco products n.e.c.	▼	▲	▲
Edition of newspapers, magazines and periodicals publications	▲	▼	▼
Manufacture of refined petroleum	...	...	...
Production of cement	▼	▲	▲
Manufacture of basic iron and steel	▲	▲	▲
Manufacture of family cars and minivans	▼	▲	▲
Manufacture of pickup trucks	▼	▲	▲
Manufacture of passenger and freight transport vehicles	▼	▲	▲

Notes:

Provisional data.

... indicates data not available at the time of presentation of the results.

Source: Dirección Provincial de Estadística (DPE).

<sup>1</sup> The industrial indicators of the Buenos Aires Province are monthly calculated by a team of the *Dirección de Estadísticas Económicas* composed by Verónica Teilletchea (principal analyst) and Manuel Vargas (data collection).

<sup>2</sup> This category also includes some models of family cars whose interior are adapted to carry some cargo.

<sup>3</sup> Not elsewhere classified.

**Table 2**  
**Activities grouped according to their Y/Y variation and accumulated variation**  
**December 2010**

Accumulated variations (January-December)		
Signo	+	-
Y/Y variations (December)	+	
		Production and processing of poultry
		Production of cookies and cakes
		Production of beer, malt liquors and malt
		Production of cigarettes and tobacco products n.e.c.
		Production of cement
		Manufacture of basic iron and steel
		Manufacture of family cars and minivans
		Manufacture of pickup trucks
		Manufacture of passenger and freight transport vehicles
	Production of milk and dried milk products	Edition of newspapers, magazines and periodicals publications
	Grinding wheat	
-		

Note: Provisional data.

Source: Dirección Provincial de Estadística (DPE).

## Variation of the Industry in December 2010 for selected activities

This report shows the performance of 12 activities, divided into 14 series that include: Production and processing of poultry; Production of cold cuts; Production of milk and dried milk products; Grinding wheat; Production of cookies and cakes; Production of beer, malt liquors and malt; Production of cigarettes and tobacco products n.e.c.; Edition of newspapers, magazines and periodicals publications; Manufacture of refined petroleum; Production of cement; Manufacture of basic iron and steel; Manufacture of family cars and minivans; Manufacture of pickup trucks and Manufacture of passenger and freight transport vehicles.

Table 3 shows percentage variations (monthly, year-over-year, and accumulated) of the selected series for December 2010.

**Table 3**  
**Percentage variations**  
**December 2010**

Clanae Code 1997	Activity	Percentage Variations		
		Monthly	Y/Y	Accumulated to December 2010 inter-annual
15112	Production and processing of poultry	8.1	3.3	6.4
15113	Production of cold cuts	...	...	...
15201	Production of milk and dried milk products	-3.9	-2.0	1.7
15311	Grinding wheat	-35.1	-4.2	2.2
15411	Production of cookies and cakes	-22.2	5.0	4.8
15530	Production of beer, malt liquors and malt	17.0	20.2	5.0
16009	Production of cigarettes and tobacco products n.e.c.	-4.5	16.9	9.4
22120	Edition of newspapers, magazines and periodicals publications	2.5	-5.3	-5.3
23200	Manufacture of refined petroleum	...	...	...
26941	Production of cement	-0.8	17.1	8.2
27100	Manufacture of basic iron and steel	7.0	21.1	24.1
34100	Manufacture of Automobiles			
	Family cars and minivans	-17.2	9.2	26.1
	Pickup trucks	-9.9	60.4	63.0
	Passenger and freight transport vehicles	-6.8	3.7	26.0

Notes:

Provisional data.

... indicates data not available at the time of presentation of the results.

Source: Dirección Provincial de Estadística (DPE).

**Table 4**  
**Annual and Monthly Indexes**  
**Base year 1999=100**

Period	Production and processing of poultry	Production of cold cuts	Production of milk and dried milk products	Grinding wheat	Production of cookies and cakes	Production of beer, malt liquors and malt	Production of cigarettes and tobacco products n.e.c.
2003	74.99	68.98	79.44	96.79	107.11	102.12	87.26
2004	90.97	81.99	90.82	97.22	123.45	103.09	83.16
2005	115.37	86.25	103.18	88.92	154.90	104.62	75.30
2006	132.25	92.88	109.88	88.61	169.16	106.64	86.40
2007	140.63	110.36	116.93	98.01	201.57	113.86	88.31
2008	149.13	115.84	116.96	101.84	172.63	121.50	95.18
2009	163.27	118.74	115.54	98.03	193.05	123.31	99.31
<b>2009</b>							
jan-09	153.47	127.00	106.81	94.77	157.66	170.80	91.54
feb-09	144.29	97.50	107.10	93.17	164.31	144.08	93.85
mar-09	156.66	117.79	120.35	98.95	199.56	129.26	98.37
apr-09	154.64	127.42	111.40	100.86	199.48	112.51	89.19
may-09	153.98	109.24	116.51	102.02	191.44	108.73	85.26
jun-09	166.38	111.59	119.46	104.01	211.04	89.64	92.29
jul-09	169.75	112.33	120.84	108.98	206.62	83.27	91.09
aug-09	158.10	129.21	118.60	108.96	207.64	88.10	104.30
sep-09	172.28	123.75	119.72	109.77	208.82	126.93	115.92
oct-09	169.93	125.74	117.48	93.31	214.74	141.22	113.63
nov-09	172.70	117.73	112.08	83.09	205.21	140.14	119.78
dec-09	187.08	125.61	116.19	78.51	150.14	145.03	96.51
<b>2010</b>							
jan-10	163.20	130.95	109.00	91.76	157.81	164.44	106.76
feb-10	161.22	124.09	108.30	97.30	171.27	142.84	105.38
mar-10	179.28	113.23	119.23	90.98	227.76	138.62	123.69
apr-10	172.71	129.15	118.54	92.69	167.63	120.69	109.72
may-10	158.19	109.24	120.52	97.61	186.34	99.74	97.79
jun-10	176.87	123.60	121.72	111.41	223.46	84.11	98.64
jul-10	173.42	122.35	125.05	107.67	224.46	101.24	109.43
aug-10	177.91	125.11	119.66	113.09	243.00	109.16	106.36
sep-10	183.90	120.84	118.01	111.14	244.69	123.62	112.60
oct-10	166.77	113.69	117.43	97.59	220.42	146.49	101.85
nov-10	178.87	...	118.48	115.83	202.66	149.01	118.23
dec-10	193.31	...	113.87	75.22	157.62	174.30	112.85

Continue...

**Table 4**  
**Annual and Monthly Indexes**  
**Base year 1999=100**

Period	Edition of newspapers, magazines and periodicals publications	Manufacture of refined petroleum	Production of cement	Manufacture of basic iron and steel	Manufacture of Automobiles		
					Family, minivans	Pickup trucks	Passen. freight transport
2003	228.45	92.52	83.41	121.13	59.30	85.75	72.72
2004	233.02	94.57	97.57	120.62	108.31	116.15	130.77
2005	234.24	93.13	122.22	133.45	115.32	188.92	167.44
2006	233.93	98.69	142.92	126.81	175.64	234.83	191.13
2007	229.59	103.78	160.85	130.65	214.58	253.52	254.14
2008	228.59	100.21	167.78	130.16	231.86	244.62	319.06
2009	223.09	93.96	151.03	102.93	181.89	198.85	126.02
<b>2009</b>							
jan-09	230.74	94.70	148.27	88.29	47.47	76.06	4.75
feb-09	224.20	83.50	129.58	82.59	40.36	170.38	98.98
mar-09	228.77	101.00	138.77	93.40	160.23	191.36	105.92
apr-09	222.26	96.21	144.08	86.21	175.38	181.29	59.15
may-09	226.98	97.87	148.10	92.03	205.28	163.19	114.49
jun-09	219.39	97.09	150.91	90.34	195.89	170.44	122.82
jul-09	222.54	94.74	148.70	110.81	191.56	198.30	127.46
aug-09	222.81	94.99	171.76	115.64	212.54	212.60	112.75
sep-09	216.37	84.97	146.65	111.55	245.29	264.65	135.44
oct-09	216.97	82.57	171.15	128.62	245.74	264.97	273.43
nov-09	223.32	98.81	163.23	115.65	249.24	259.01	182.56
dec-09	222.79	101.05	151.16	120.10	213.75	233.93	174.45
<b>2010</b>							
jan-10	227.62	100.62	135.86	128.32	69.01	167.47	36.58
feb-10	223.61	91.40	133.16	105.38	176.24	237.48	124.10
mar-10	214.27	103.51	166.69	126.40	236.16	279.13	180.47
apr-10	211.92	98.76	164.11	113.64	225.84	305.53	181.17
may-10	215.27	100.97	163.95	131.05	218.31	313.60	136.37
jun-10	202.61	95.62	159.43	108.67	250.72	338.61	196.91
jul-10	202.75	99.80	170.48	114.87	237.14	275.18	174.57
aug-10	206.94	106.29	171.91	145.87	283.17	412.13	148.87
sep-10	204.09	100.15	166.91	134.15	282.24	393.37	201.89
oct-10	209.72	92.69	173.28	142.65	257.90	374.50	149.57
nov-10	205.78	99.17	178.36	135.88	281.97	416.72	194.13
dec-10	211.00	...	177.01	145.41	233.38	375.29	180.94

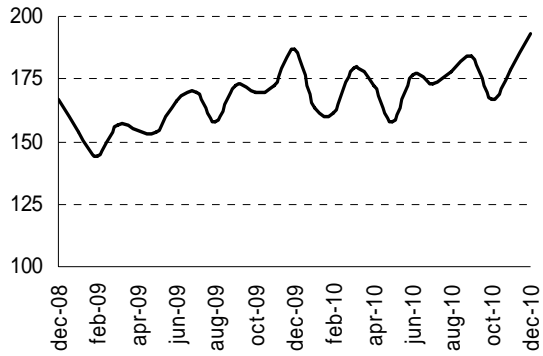
## Notes:

Provisional data.

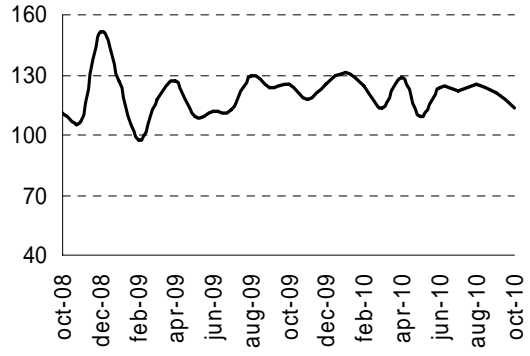
... indicates data not available at the time of presentation of the results.

Source: Dirección Provincial de Estadística (DPE).

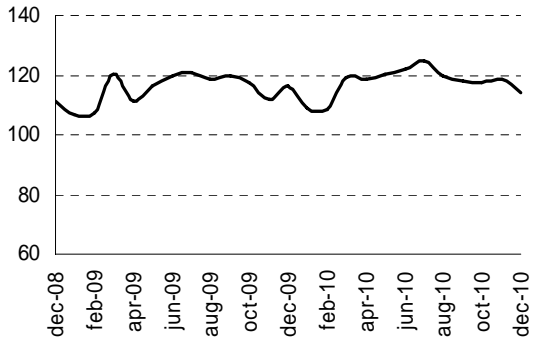
**Production and processing of poultry**



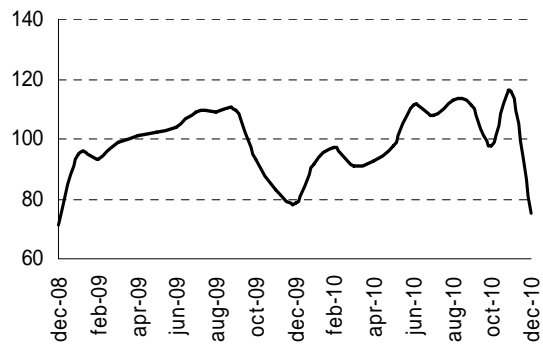
**Production of cold cuts**



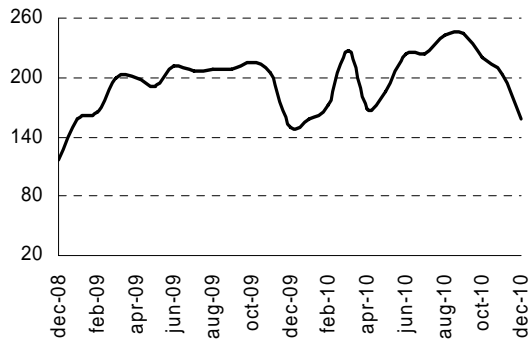
**Production of milk and dried milk products**



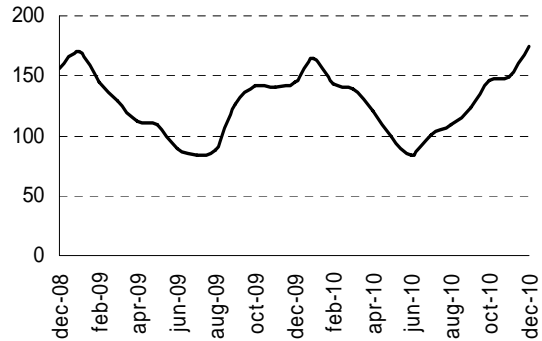
**Grinding wheat**



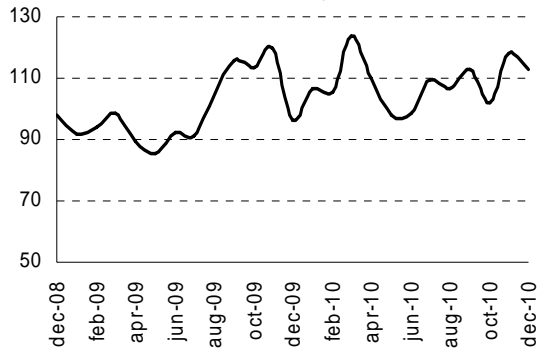
**Production of cookies and cakes**



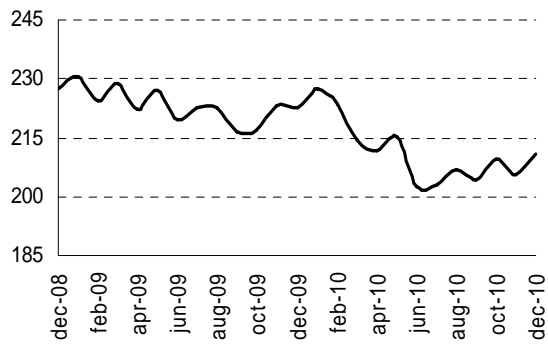
**Production of beer, malt liquors and malt**



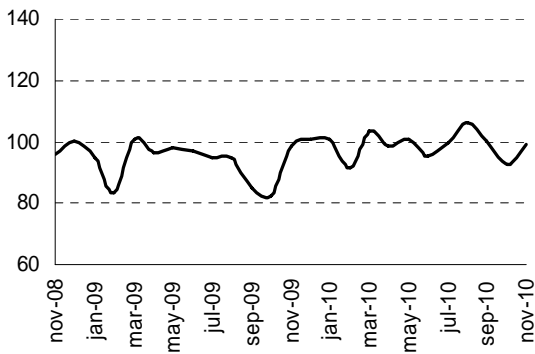
**Production of cigarettes and tobacco products previously unclassified**



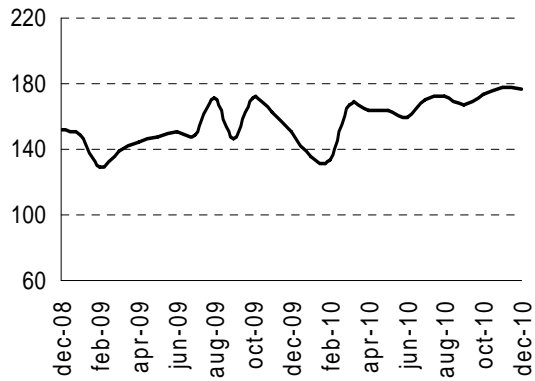
**Edition of newspapers, magazines and periodicals publications**



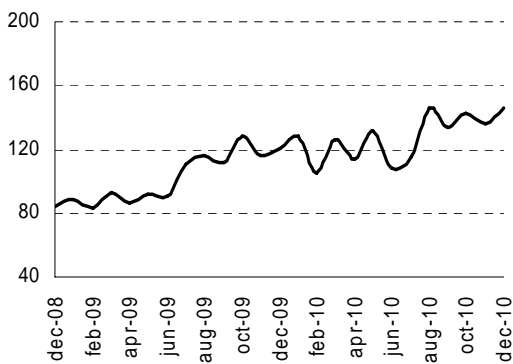
**Manufacture of refined petroleum**



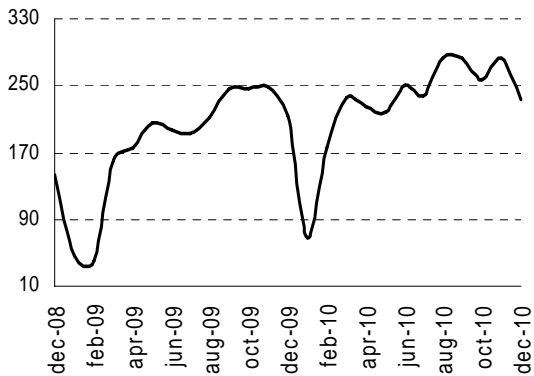
**Production of cement**



**Manufacture of basic iron and steel**

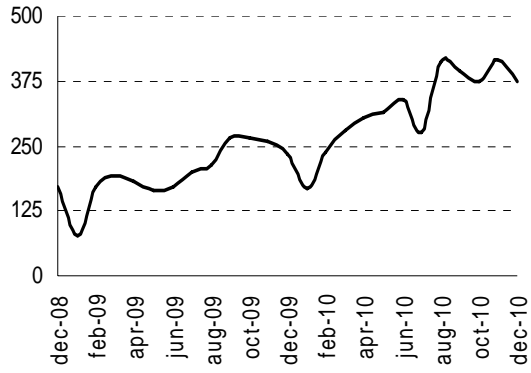


**Manufacture of family cars and minivans**





**Manufacture of pickup trucks**



**Manufacture of passenger and freight transport vehicles**

